



## Acme Sanitary Ware Co Ltd

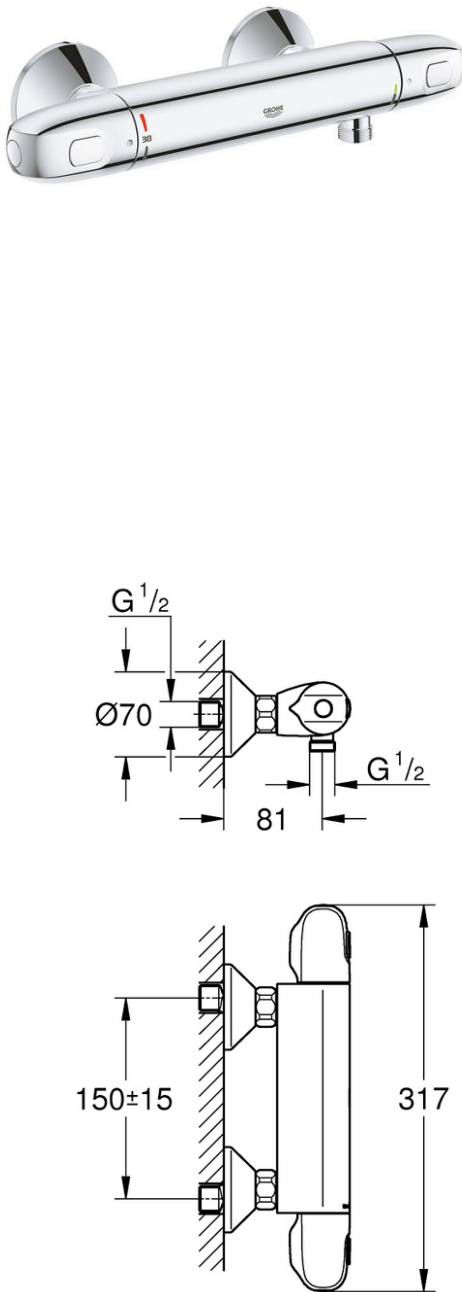






Acme Building, 22-28 Nanking Street, Kowloon, Hong Kong  
 Tel: 2388 7171 Fax: 2710 8012  
 E-mail: acme@acmesanitary.com.hk  
 Website: www.acmesanitaryware.com.hk



Pure Freude  
an Wasser

PROJECT		REF		REV	ITEM CODE	
LOCATION		DATE			PAGE	

## SANITARY WARE SPECIFICATION SHEET

Item Descriptions	GROHE (Germany) "Grohtherm 1000" Chrome plated thermostatic shower mixer 1/2 "	Illustration/ Drawing
Dimensions	L317 x W81 x H70 mm	 <div style="display: flex; flex-direction: column; align-items: center;">       </div>
Model	34143003	
Finish	Chrome Plated	
Country of origin	Portugal	
Manufacturer	GROHE Limited	
Supplier	Acme Sanitary Ware Co. Ltd Mr. Eric Wong/ Mr. Don Yuen	
Contact Tel/Fax	(852) 2388-7171 / (852) 2710-8012	
E-mail	acme@acmesanitary.com.hk	
Website	www.acmesanitary.com.hk	
<b>"Grohtherm 1000"</b> <b>Thermostatic shower mixer 1/2 "</b> <ul style="list-style-type: none"> <li>· wall mounted</li> <li>· <b>GROHE CoolTouch</b> safety housing</li> <li>· <b>GROHE StarLight</b> chrome finish</li> <li>· <b>GROHE MetalGrip</b> ergonomically shaped metal handles</li> <li>· <b>GROHE SafeStop</b> safety button at 38°C (calibration required)</li> <li>· <b>GROHE SafeStop</b> Plus optional temperature limiter at 43°C included</li> <li>· <b>GROHE TurboStat</b> compact cartridge with wax thermoelement</li> <li>· integrated mixed water shut off</li> <li>· volume handle with <b>GROHE EcoButton</b> (economy button with individually adjustable economy stop)</li> <li>· ceramic headpart 1/2", 180°</li> <li>· shower bottom outlet 1/2"</li> <li>· built-in non return valves</li> <li>· dirt strainers</li> <li>· protected against backflow</li> <li>· S-unions</li> <li>· <b>metal escutcheon min. recommended pressure 1 bar</b></li> <li>· <b>GROHE EcoJoy</b> technology for less water and perfect flow</li> </ul>		

Note:  [Grohe 34143003](https://www.youtube.com/watch?v=nL-Fqk0MsdC) <https://www.youtube.com/watch?v=nL-Fqk0MsdC>

\* All information of the above is for the reference only. No prior notice is made if any changes.



## Acme Sanitary Ware Co Ltd

Acme Building, 22-28 Nanking Street, Kowloon, Hong Kong  
 Tel: 2388 7171 Fax: 2710 8012  
 E-mail: acme@acmesanitary.com.hk  
 Website: www.acmesanitaryware.com.hk



Pure Freude  
an Wasser

PROJECT		REF		REV	ITEM CODE	
LOCATION		DATE			PAGE	

## SANITARY WARE SPECIFICATION SHEET



### Constant water temperature thanks to reliable GROHE TurboStat technology

Our precise control technology ensures an instant water flow at the desired temperature and keeps it constant irrespective of any fluctuations in water pressure or supply.



### GROHE CoolTouch – never too hot to handle

Thanks to the GROHE CoolTouch technology, the temperature of the tap body will never exceed your shower temperature. Engineered with an integrated cooling channel separating the hot water supply from the outer surface of your thermostat, it is always safe for you to handle. This feature is especially important to protect children from scalding on hot tap surfaces, making your bathroom safely enjoyable for the whole family.



### GROHE SafeStop (Plus) – double scalding protection at 38°C and (optional) 43°C

Great for homes with children, this safety feature is set at 38°C, preventing you from turning up the water temperature too high. If desired, higher temperatures can be selected by pushing the button. Optional for extra safety: the easy-to-fit GROHE SafeStop Plus limiter ensures that the temperature does not exceed 43°C.



### Easy to clean thanks to the GROHE StarLight chrome coating

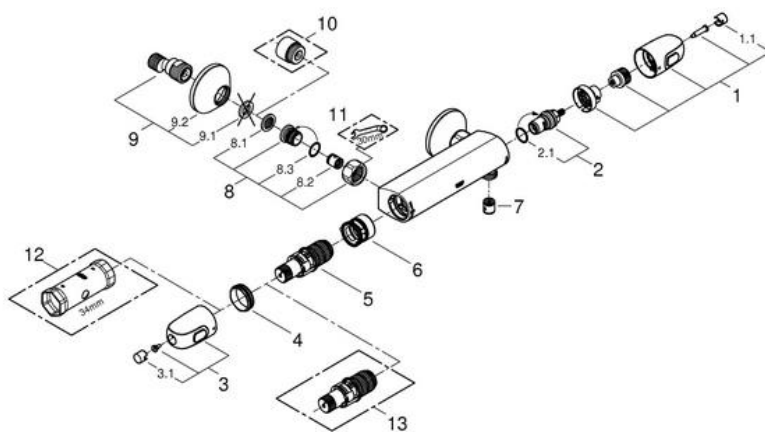
Just wipe the tap down with a dry cloth – the ultra smooth surface finish is scratch resistant and ensures a lasting luminous sheen. You'll save plenty of time cleaning while your tap always looks shiny and new.

### GROHE EcoJoy with water-saving function for reduced consumption

GROHE EcoJoy reduces water consumption by up to 50% without compromising on performance. Whenever you turn on your tap, you will enjoy a full jet of water while saving money nonetheless.

### GROHE MetalGrip – high-grade metal handles for excellent usability and high durability

With their ergonomic metal handles, these GROHE fittings offer optimal grip. Crafted in fluid shapes and made from a high-grade material, they can be operated with minimal effort, even with soapy hands, and come with the high durability characteristic of all GROHE products.



Pos.-nr.	Prod. description	Order-nr.
1	Shut-off handle	47972000
2	Ceramic headpart, 1/2"	45346000
3	Temperature control handle	47973000
4	Fitting ring	47743000
5	Thermostatic compact cartridge 1/2"	47439000
6	Race	47975000
7	Non-return valve	08565000
8	Non-return valve	47189000
9	S-union	12075000
10	Extension 3/4", 20 mm	0713000M*
11	Special spanner	19377000*
12	Socket spanner	19332000*
13	GROHE TurboStat cartridge 1/2"	47175000*

\* Optional accessories

Note:

\* All information of the above is for the reference only. No prior notice is made if any changes.



Water Supply Department

入境事務大樓 48 樓

Room 4801, 7 Gloucester Road, Wan Chai, Hong Kong

本署檔號 : (2) in WSD 3321/2020 T/J(1118/2020)  
Our ref.  
來函檔號 :  
Your ref.

電話 :  
Tel.  
傳真 : 2824 0578  
Fax.


8 October 2020



### Approval of "GROHE" Thermostatic Mixer (General Acceptance No. C20200883)

Your letter ref. WRC/2320 dated 20 August 2020 refers.

Having considered the test report ref. J24986 issued on 23 March 2020 by Nutek Systems (HK) Ltd., this Authority accepts that the fitting described below complies with, and its use when correctly installed does not contravene, the Waterworks Ordinance and Regulations.

**Name of Manufacturer:** Grohe AG  
**Country of Origin:** Portugal  
**Brand:** Grohe  
**Details of Fitting:** 1/2" Thermostatic shower mixer  
**Model:** 34143XX3  
(where the digits "XX" denote the code of colour)  
**Body Markings:**   
**Expiry Date:** 20 January 2025





This Authority hereby permits the use of the above fitting in fresh water plumbing systems subject to full adherence to Waterworks installation requirements. In particular, you are required to draw your customers' attention to the following requirement-

"The cold water supply to the fitting shall be drawn from the same source that supplies the hot water apparatus so as to provide a balanced pressure and to obviate the risk of scalding in the event of a restriction or failure in the water supply." AND

"The shower head or handspray should not be placed in submerged conditions and should be securely fixed to the original position after use."

A condition of this acceptance is that the fitting to be installed shall be replicas of the sample as certified by the testing agent mentioned above and without modifications. This acceptance may be withdrawn at any time if the standard of the fitting installed fails to meet that of the approved sample or if the fitting is found to be unsuitable for use in fresh water plumbing systems.

This acceptance is only applicable to the main body of the fitting, unless otherwise specified.

For the use of the fitting in any project, the General Acceptance Number of this letter must be quoted as a means of identification of acceptance of the fitting by this Authority.

Should you have any enquiries, please contact our Engineer Mr. Terry KUNG at tel. no. 3583 4086.

Yours faithfully,



(CHAN Chung-kun)

for Director of Water Supplies

Encl.

c.c.      WSD 3321/1/82    ] - without catalogue  
             ME/MC            ] - with soft copy only